



# SCHEDULED EXHIBITORS

## EXHIBITORS (BY COMPANY)

513	ABBEY PRESS PRINTING DIVISION	206	INSERVICE AMERICA (NEW)
401	ADVANCED SOLUTIONS, INC.	818	INTERNET HUB
205	AKA PRINTING & MAILING SERVICES	807	J.A. GLYNN / JAG ADVISORS
207	AKA PRINTING & MAILING SERVICES	306	JAMES A. DOHERTY COMPANY
505	ALANIZ, (A DMH COMPANY)	304	KELLMARK CORPORATION
413	ALLIED PRINTING RESOURCES (NEW)	312	L.W. ROBBINS ASSOCIATES
705	AMERGENT	509	MARY ELIZABETH GRANGER & ASSOCIATES, INC.
707	AMERGENT	213	MARY MOTHER OF GOD MISSION SOCIETY (NEW)
804	AMERGENT	107	MAVRO IMAGING (NEW)
806	AMERGENT	410	MERRILL LYNCH
305	AMERICAN CITY BUREAU, INC.	611	METAFILE INFORMATION SYSTEMS, INC.
106	THE ASSOCIATION OF MARIAN HELPERS	415	MEYER PARTNERS
204	B & W PRESS, INC.	402	MILES KEDEX COMPANY, INC.
300	B.A.C. & ASSOCIATES, INC.	507	THE NATIONAL CATHOLIC REPORTER
607	BARTON-COTTON HOLDINGS, LLC	100	NEW GROUP MEDIA (NEW)
609	BARTON-COTTON HOLDINGS, LLC	712	NPT PUBLISHING GROUP
404	BLACKBAUD	109	NU ART (NEW)
406	BLACKBAUD	307	THE OFFICIAL CATHOLIC DIRECTORY
508	BRICKMILL MARKETING SERVICES	604	OUR SUNDAY VISITOR
510	BRICKMILL MARKETING SERVICES	809	PETRUS DEVELOPMENT, LLC (NEW)
512	BRICKMILL MARKETING SERVICES	108	PITNEY BOWES (NEW)
411	CALMARK GROUP	702	THE PRINTED WORD
412	CAPITAL DESIGN	211	PROMOEXPERTS, INC. (NEW)
706	CARDS BY ANNE (NEW)	405	QUADRIGA ART, INC.
606	CARING HABITS, INC.	407	QUADRIGA ART, INC.
708	CATHEDRAL CORPORATION (NEW)	800	RESOURCEONE
506	CATHOLIC DIGEST	803	RESOURCEONE TECHNOLOGIES
201	CORPORATE TRAVEL SERVICE (NEW)	504	RKG FUNDRAISING SERVICES
511	CREED ROSARY	110	RK HISPANICA DIRECT/ROLA KIMMERLING ASS. INC.(NEW)
313	CRESCENDO INTERACTIVE	710	RMS DIRECT INC. (NEW)
601	CULL MARTIN & ASSOCIATES, INC.	113	RST MARKETING (NEW)
812	DATA MANAGEMENT INC. (NEW)	704	RUOTOLO ASSOCIATES INC.
815	DIGITAL INK (NEW)	208	RUSS REID (NEW)
713	DIRECT DEVELOPMENT, INC.	605	SATURN CORPORATION
608	DIRECT MAIL MARKETING, INC.	111	THE SHARPE GROUP
709	DONOR CARE CENTER. (NEW)	612	THE STELTER COMPANY
309	DONORPERFECT/SOFTWARE	613	SILVERTECH, INC.
811	DONORSEARCH.NET	102	SOFTREK CORPORATION
808	DOUGLAS SHAW & ASSOCIATES (NEW)	409	SPECIALISTS MARKETING SERVICES, INC.
810	DOUGLAS SHAW & ASSOCIATES	700	STRATMARK CORPORATION (NEW)
209	ESTEE MARKETING GROUP, INC.	210	TACKLE MARKETING GROUP, INC.
308	EU SERVICES, INC.	212	TACKLE MARKETING GROUP, INC.
114	EVENT JOURNAL, INC. (NEW)	610	TELOSA SOFTWARE
502	FAR HORIZONS	310	TENSION ENVELOPE CORPORATION
116	FENSKE MEDIA CORPORATION	514	TRINITY DIRECT
105	FISC SOLUTIONS (NEW)	408	W & E BAUM
200	GRAHAM-PELTON CONSULTING, INC.	311	WEALTHENGINE
		711	ZIELINSKI COMPANIES





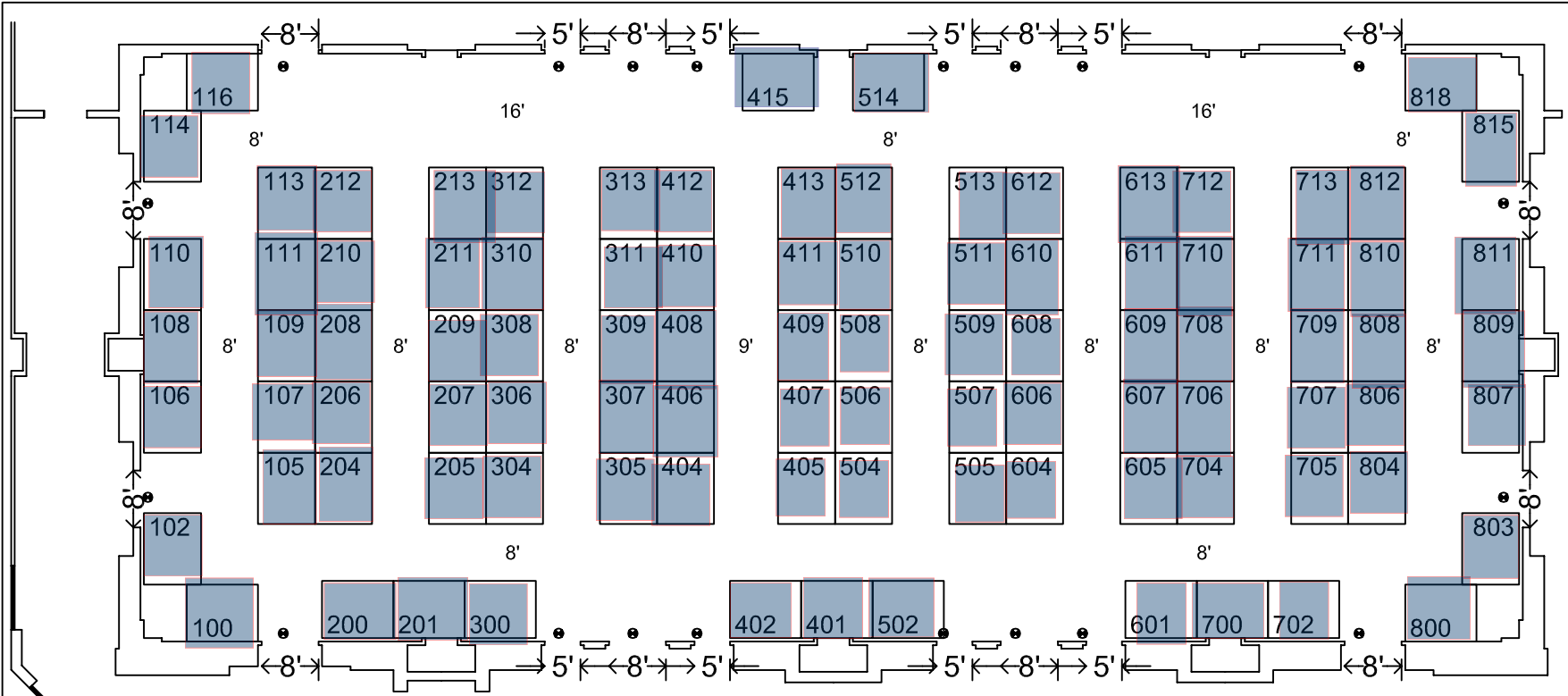
# 2009 NATIONAL CATHOLIC DEVELOPMENT CONFERENCE

## SCHEDULED EXHIBITORS

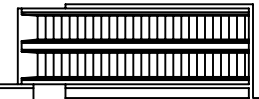
### EXHIBITORS (BY BOOTH NUMBER)

100	NEW GROUP MEDIA (NEW)	502	FAR HORIZONS
102	SOFTREK CORPORATION	504	RKG FUNDRAISING SERVICES
105	FISC SOLUTIONS (NEW)	505	ALANIZ, (A DMH COMPANY)
106	THE ASSOCIATION OF MARIAN HELPERS	506	CATHOLIC DIGEST
107	MAVRO IMAGING (NEW)	507	THE NATIONAL CATHOLIC REPORTER PUBLISHG CO.
108	PITNEY BOWES (NEW)	508	BRICKMILL MARKETING SERVICES
109	NU-ART (NEW)	509	MARY ELIZABETH GRANGER & ASSOCIATES
110	RK HISPANICA DIRECT/ROLA KIMMERLING ASSN, INC.	510	BRICKMILL MARKETING SERVICES
111	THE SHARPE GROUP	511	CREED ROSARY
113	RST MARKETING (NEW)	512	BRICKMILL MARKETING SERVICES
114	EVENT JOURNAL, INC. (NEW)	513	ABBAY PRESS PRINTING DIVISION
116	FENSKE MEDIA CORPORATION	514	TRINITY DIRECT
200	GRAHAM-PELTON CONSULTING, INC.	601	CULL MARTIN & ASSOCIATES, INC.
201	CORPORATE TRAVEL SERVICE (NEW)	604	OUR SUNDAY VISITOR
204	B & W PRESS	605	SATURN CORPORATION
205	AKA PRINTING & MAILING	606	CARING HABITS, INC.
206	INSERVICE AMERICA (NEW)	607	BARTON-COTTON HOLDINGS, LLC
207	AKA PRINTING & MAILING	608	DIRECT MAIL MARKETING, INC.
208	RUSS REID (NEW)	609	BARTON-COTTON HOLDINGS, LLC
209	ESTEE MARKETING GROUP	610	TELOSA SOFTWARE
210	TACKLE MARKETING GROUP	611	METAFILE INFORMATION SYSTEMS, INC.
211	PROMOEXPERTS, INC. (NEW)	612	THE STELTER COMPANY
212	TACKLE MARKETING GROUP	613	SILVERTECH, INC.
213	MARY MOTHER OF GOD MISSION SOCIETY (NEW)	700	STRATMARK CORPORATION (NEW)
300	B.A.C. & ASSOCIATES, INC.	702	THE PRINTED WORD
304	KELLMARK CORPORATION	704	RUOTOLO ASSOCATES, INC.
305	AMERICAN CITY BUREAU	705	AMERGENT
306	JAMES A. DOHERTY COMPANY	706	CARDS BY ANNE (NEW)
307	THE OFFICIAL CATHOLIC DIRECTORY	707	AMERGENT
308	EU SERVICES	708	CATHEDRAL CORPORATION (NEW)
309	DONORPERFECT/SOFTWARE	709	DONOR CARE CENTER (NEW)
310	TENSION ENVELOPE CORPORATION	710	RMS DIRECT INC. (NEW)
311	WEALTHENGINE	711	ZIELINSKI COMPANIES
312	L.W. ROBBINS	712	NPT PUBLISHING GROUP
313	CRESCENDO INTERACTIVE	713	DIRECT DEVELOPMENT, INC.
401	ADVANCED SOLUTIONS INTERNATIONAL	800	RESOURCE ONE
402	MILES KEDEX COMPANY, INC.	803	RESOURCE ONE TECHNOLOGIES
404	BLACKBAUD	804	AMERGENT
405	QUADRIGA ART	806	AMERGENT
406	BLACKBAUD	807	J.A. GLYNN/JAG ADVISORS
407	QUADRIGA ART	808	DOUGLAS SHAW & ASSOCIATES (NEW)
408	W & E BAUM	809	PETRUS DEVELOPMENT, LLC (NEW)
409	SPECIALIST MARKETING SERVICES	810	DOUGLAS SHAW & ASSOCIATES
410	MERRILL LYNCH	811	DONORSEARCH.NET
411	CALMARK GROUP	812	DATA MANAGEMENT INC. (NEW)
412	CAPITAL DESIGN	815	DIGITAL INK (NEW)
413	ALLIED PRINTING RESOURCES (NEW)	818	INTERNET HUB
415	MEYER PARTNERS		





FOYER AREA



FOYER AREA